

**FABLED**  
COPPER CORP.



EXPLORING FOR  
**CRITICAL METALS**  
IN CANADA

August 2023



# DISCLAIMER

This presentation may contain certain information that constitutes forward-looking statements. Forward-looking statements are frequently characterized by words such as “plan,” “project,” “intend,” “believe,” “anticipate,” and other similar words, or statements that certain events or conditions “may” or “will” occur. Forward-looking statements are made and are subject to a variety of risks and uncertainties and other factors that could cause actual events or results to differ materially from those projected in the forward-looking statements. These factors include inherent risks involved in the exploration and development of mineral properties, the uncertainties involved in interpreting drilling results and other geological data, fluctuating metal prices and other factors described above.

The Company disclaims any obligation to update or revise any forward-looking statements if circumstances or management’s estimates or opinions are changed. The reader is cautioned not to place undue reliance on forward-looking statements. The technical information contained within this presentation has been reviewed and approved by the Company’s, **CEO, President and Director, Peter J. Hawley**, P.Geo, a Qualified Person as defined by NI 43-101.

# CAPITAL STRUCTURE –



**Symbol:**

**FABL**

**Share Price**

**\$0.09**

**Market Capitalization:**

**\$1.85M**

**Stock Options:**

**845,000 at \$1.00**

**Shares Issued Fully Diluted:**

**21,745,173**

**Cash Position:**

**\$250,000**

# HIGHLIGHTS – MUSKWA PROJECT

1.

## WORLD CLASS LOCATION

The British Columbia Geological Survey's MINFILE database lists over 7,800 copper-bearing occurrences in the province; 4,057 of these list copper as the primary commodity.

2.

## STRONG FOUNDATION FOR GROWTH

With already outlined copper bodies and numerous copper occurrences being used as a historical data base, modern exploration tools will lead the way to expanding the known mineralization.

3.

## SIGNIFICANT EXPLORATION UPSIDE

The use of cutting-edge technology, a compilation of multi data sets from past historical work, and the addition of new vector information by the use of drones has already resulted in new discovery.

4.

## TRACK RECORD IN EXPLORATION

Proven exploration team with over 200 years' combined experience.





# BOARD AND MANAGEMENT



**Peter Hawley, B. Eng., BSc, P.Geo, CEO, Director** – Co founder of Fabled Copper Corp, Co founder of Fabled Silver Gold Corp, founder of Scorpio Mining Corporation (renamed Americas Gold and Silver Corporation) a Mexican low cost polymetallic producer. Founder of Scorpio Gold Corp, a Nevada open pit gold producer. Co founder of Niogold Resource Corp (renamed Osisko Mining – O3 Mining Division). He has over 40 years of mining industry experience that spans grassroots exploration through to development and production.



**Luc Pelchat, Director** - Mr. Pelchat is the founder and President of the Canadian Chamber of Commerce in North Mexico. Following 24 years with a Canadian multinational company operating in the construction industry, Mr. Pelchat formed a number of his own companies and has realized multiple projects in the construction industry in Mexico. President / CEO of Kalma Capital Corp.



**Louis Martin, P.Geo** - has been a major contributor to the co-discovery of several gold and base metal deposits during his more than 35-year career working for major, mid-tier, and junior mining companies. His experience includes exploration and development roles throughout Canada. Mr. Martin has been fortunate to be part of the exploration teams that were awarded the Discovery of the Year by the AEMQ (Quebec Mineral Exploration Association) for the West Ansil Deposit (2005) and the Louvicourt Deposit (1989). For the last 6 years Mr. Martin has worked as a technical advisor and geological consultant for numerous junior and major mining companies. Prior to this, Mr. Martin was Vice President of Exploration with Clifton Star Resources. Previous experience on several world-class deposits includes work with Yamana, Agnico-Eagle, Noranda / Falconbridge / Xstrata Copper, Goldcorp, Teck and Aur Resources. Mr. Martin is a professional geologist graduating from Concordia University (1983), Montreal, QC, and is a member in good standing with both the Ordre des Géologues du Québec and the Association of Professional Geoscientists of Ontario. Mr. Martin has sat as a director on the boards of several not-for-profit organizations.

# BOARD AND MANAGEMENT



**Pat Donovan** - is a retired geologist with over 30 years in mineral exploration and project development experience. A former director of the Prospectors and Development Association of Canada, he was the Vice President of Corporate Development with Detour Gold Corp. Previous to this he was employed by Hunter Dickinson Inc. from 2006 to 2008 managing and delivering a positive feasibility studies for both the Chinese and Canadian requirements on the Xietongmen copper-gold project in Tibet, China for Continental Minerals Corporation. From 1999 to 2006, he was with Barrick Gold Corporation managing advanced exploration projects in Tanzania (Tulawaka and Buzwagi projects). Previously he managed all exploration programs for Consolidated Trillion Resources Ltd. in Zimbabwe. He was with Placer Dome Canada from 1991 to 1996 responsible for all Québec exploration activities. He is a graduate of St. Francis Xavier University with a major in Geology



**Brian R. Booth, P. Geo. – Advisor to the Board** - Brian brings more than 30 years of experience in mineral exploration throughout Canada, Europe and southeast Asia. Brian was previously CEO and Board Member of Pembroke Copper Corp., where he developed the copper resource at Pecoy in Peru. He also served as the CEO, President and Director of Lake Shore Gold Corp., where he completed an acquisition of the Bell Creek mine and mill and led the team that discovered the Timmins West, Thunder Creek and Bell Creek deep deposits. Brian began his career as a geologist on the Casa Berardi gold discoveries in Quebec. He opened Inco's exploration office in Val d'Or, Quebec and is credited with the discovery of the Douay West gold deposit in 1990 and was subsequently appointed to the board of Societe D'Exploration Miniere Vior Inc. In 1994, as Inco's Manager Exploration, Eastern North America, he conducted the preliminary assessment of the Voisey's Bay Ni-Cu-Co discovery. Brian later managed Inco's exploration office in Jakarta and was involved, through a JV with Highlands Gold, in the discovery of the Beutong copper porphyry in Sumatra. He holds a B.Sc. in Geology from McGill University and is also a member of the Professional Geoscientists of Ontario. Brian is also a director of SSR Mining Inc. and GFG Resources Inc.

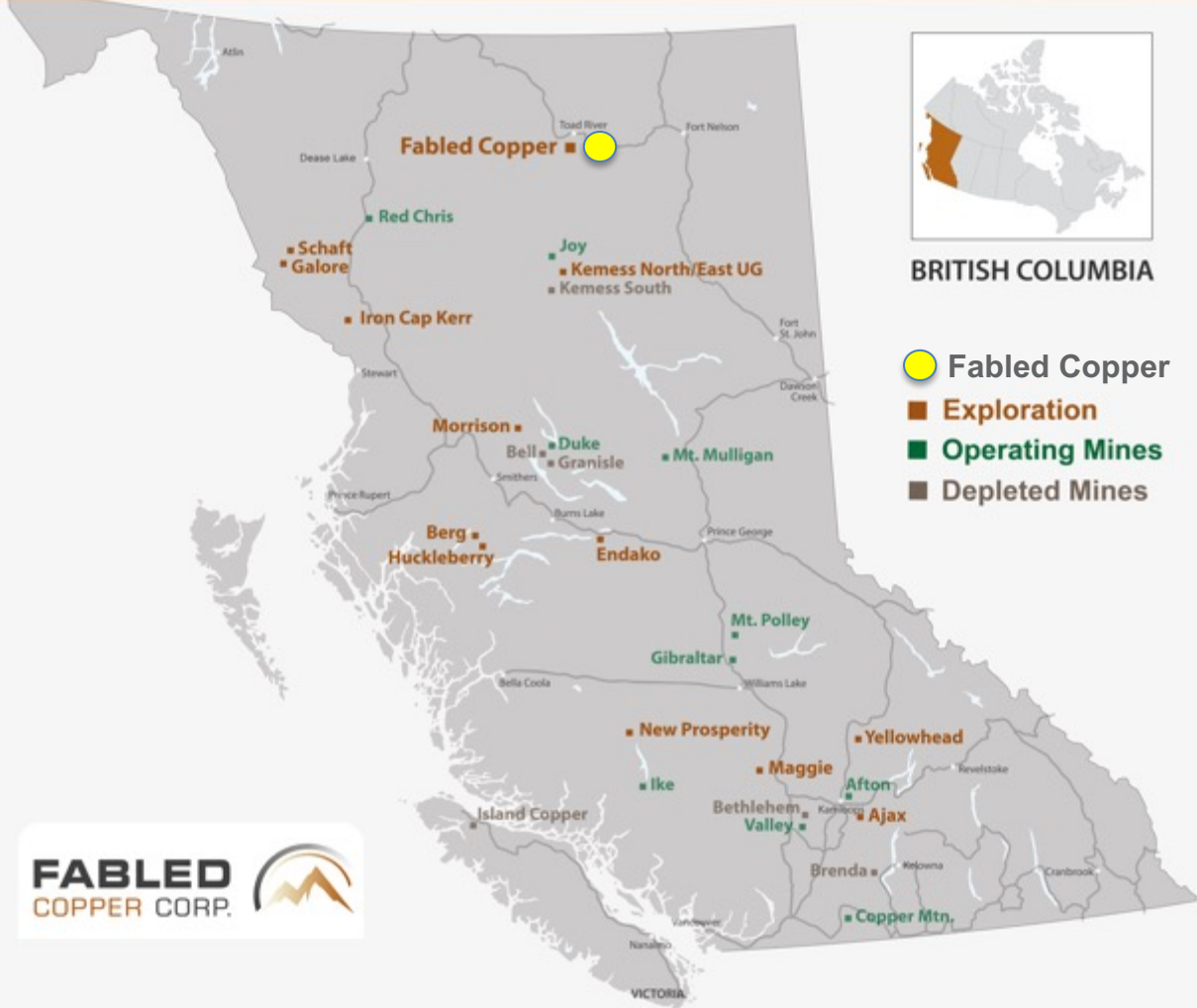
# BET YOU DID NOT KNOW...

- 53% of exploration spending in British Columbia went to the northwest sector of the province.
- In 2019 British Columbia produced over half the Nation's copper ( 54% ).
- The only copper processing facilities in Canada is the Horne smelter located in Rouyn-Noranda, Quebec and the CCR refinery in Montreal.
- The Northwest sector of British Columbia has “World Class” metal endowment with over 220 million ounces of gold and 93 billion pounds of copper.
- And only 3% has actually been mined



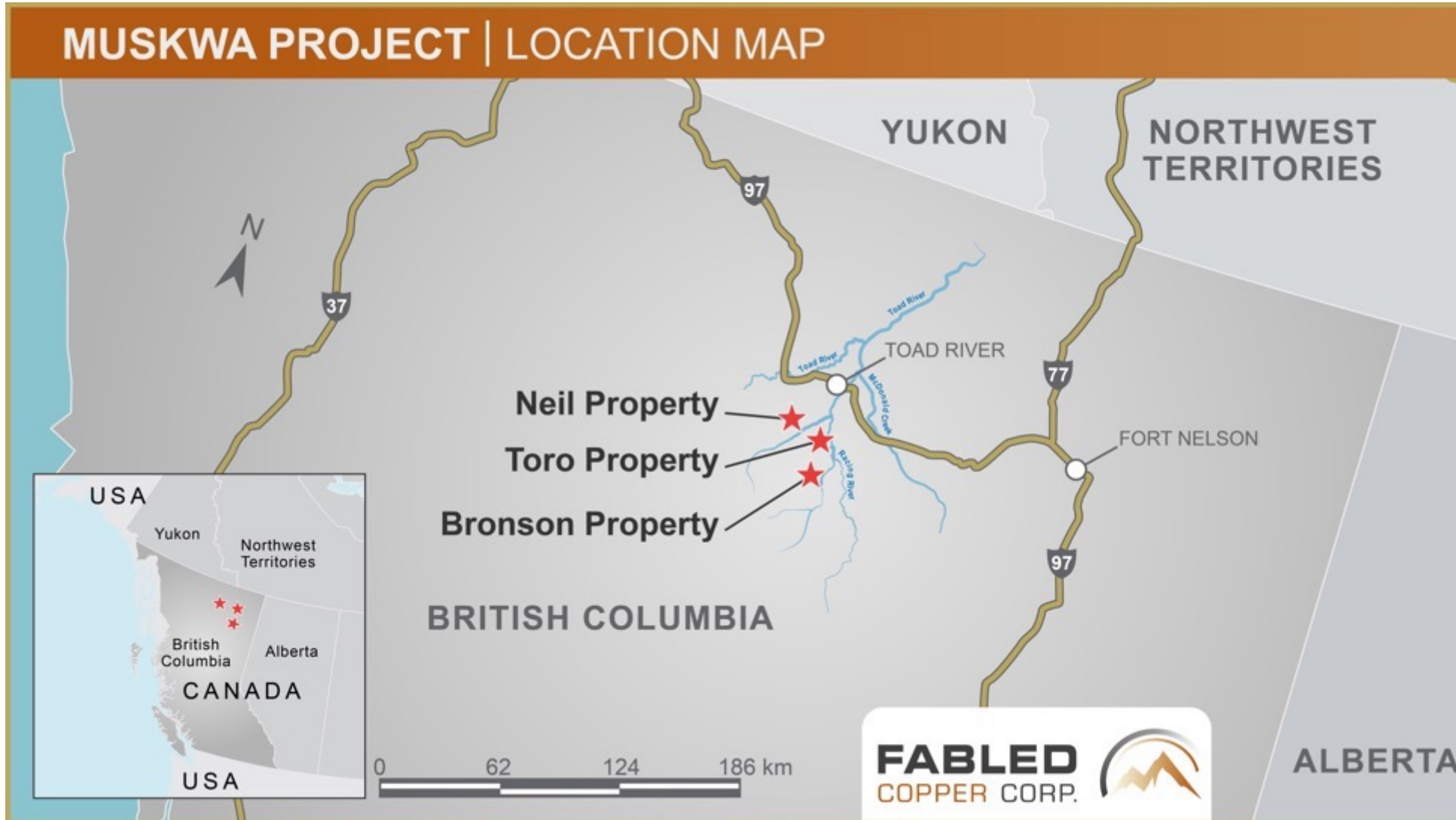
# LOCATION IS EVERYTHING

## BC COPPER PROPERTIES | LOCATION MAP



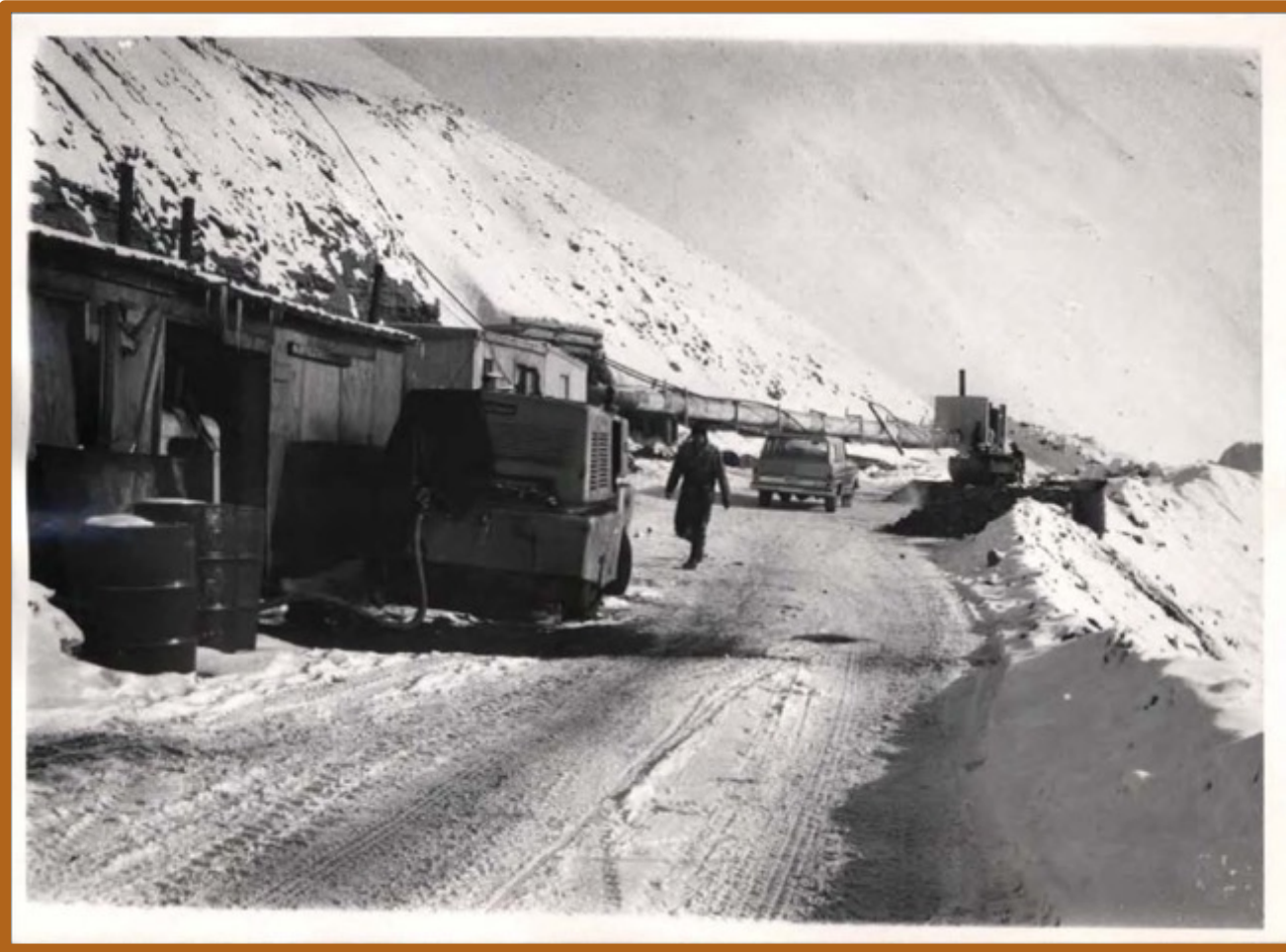


# MUSKWA PROJECT OVERVIEW





# HISTORY



Davis-Keays Mine Circa 1970

- Alaskan Highway opened area
- Prospecting occurred through late 1960's
- Churchill Copper Mining developed and mined the Magnum vein 1970 to 1974
- Milled 549,000 tons and produced 14,673 tons of copper
- Late 1960's and early 1970's Eagle vein was mapped, drilled and developed

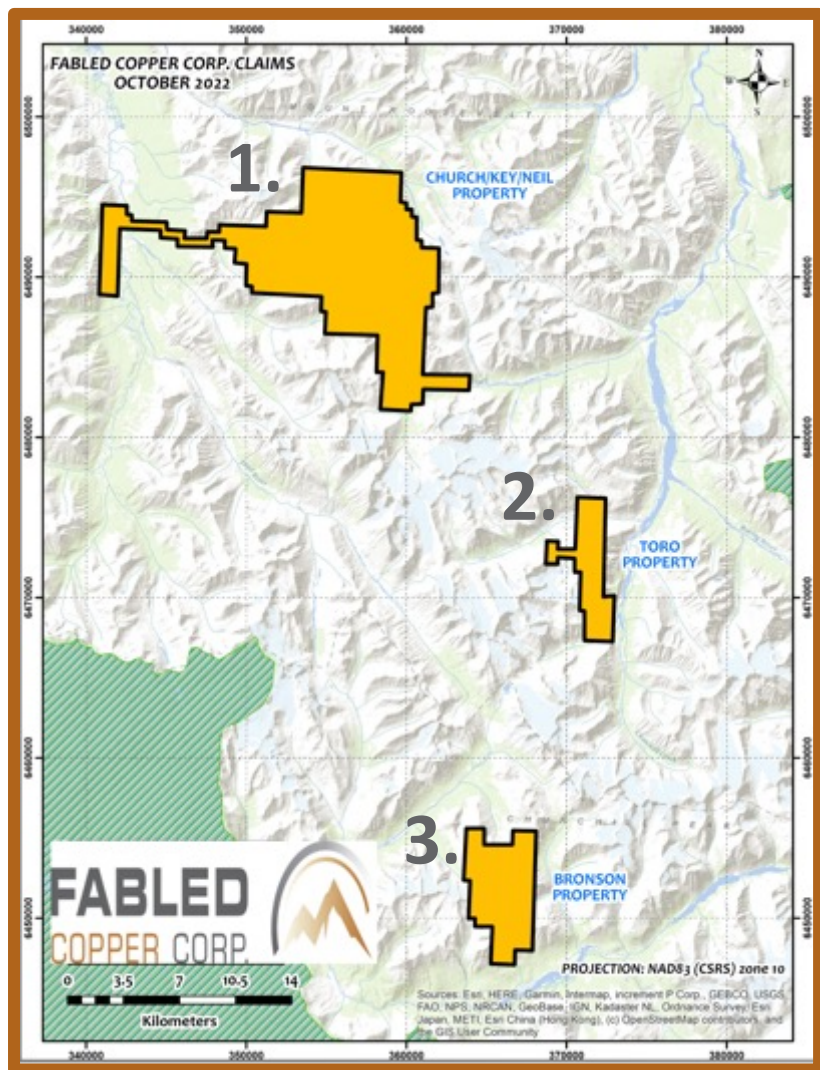
# HISTORY CONTINUED



Site Photo Circa 1970

- Positive Feasibility studies generated in 1970 and 1971 on Eagle Vein
- Change of government with change in royalty coupled with copper prices < \$0.70 resulted in abandonment
- In over 20+ years no one has entered the mine due to rock slides, snow and ice covering all portals until August 2021.

# MUSKWA PROJECT



This Property in 2021 consisted of 22 documented copper occurrence in three separate claim blocks covering 8,065 hectares:



## Neil

Toad, *Neil*, *Davis-Keays Eagle Vein*, Ram Creek No. 1, Ann-18, *Magnum*, Mac, Magnum Creek and Lady Luck copper occurrences



## Toro

John, Toro, Churchill and Ho copper occurrences



## Bronson

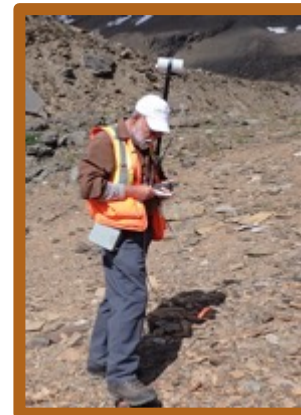
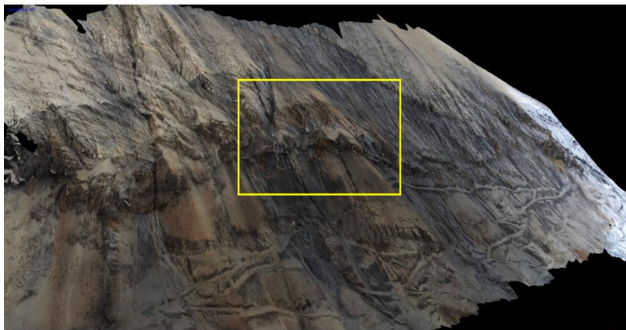
428 North, 428 Central, 428 South, PJ105, PJ100, Bronson, Book 6, Book 9-10 copper occurrences

By the end of 2022 field season the Property consisted of 90 documented copper occurrence in the 3 claim blocks which Was increased over 100% to 16,219 hectares, due to new discoveries.



In two field seasons the Fabled Copper Field Team accomplished the following;

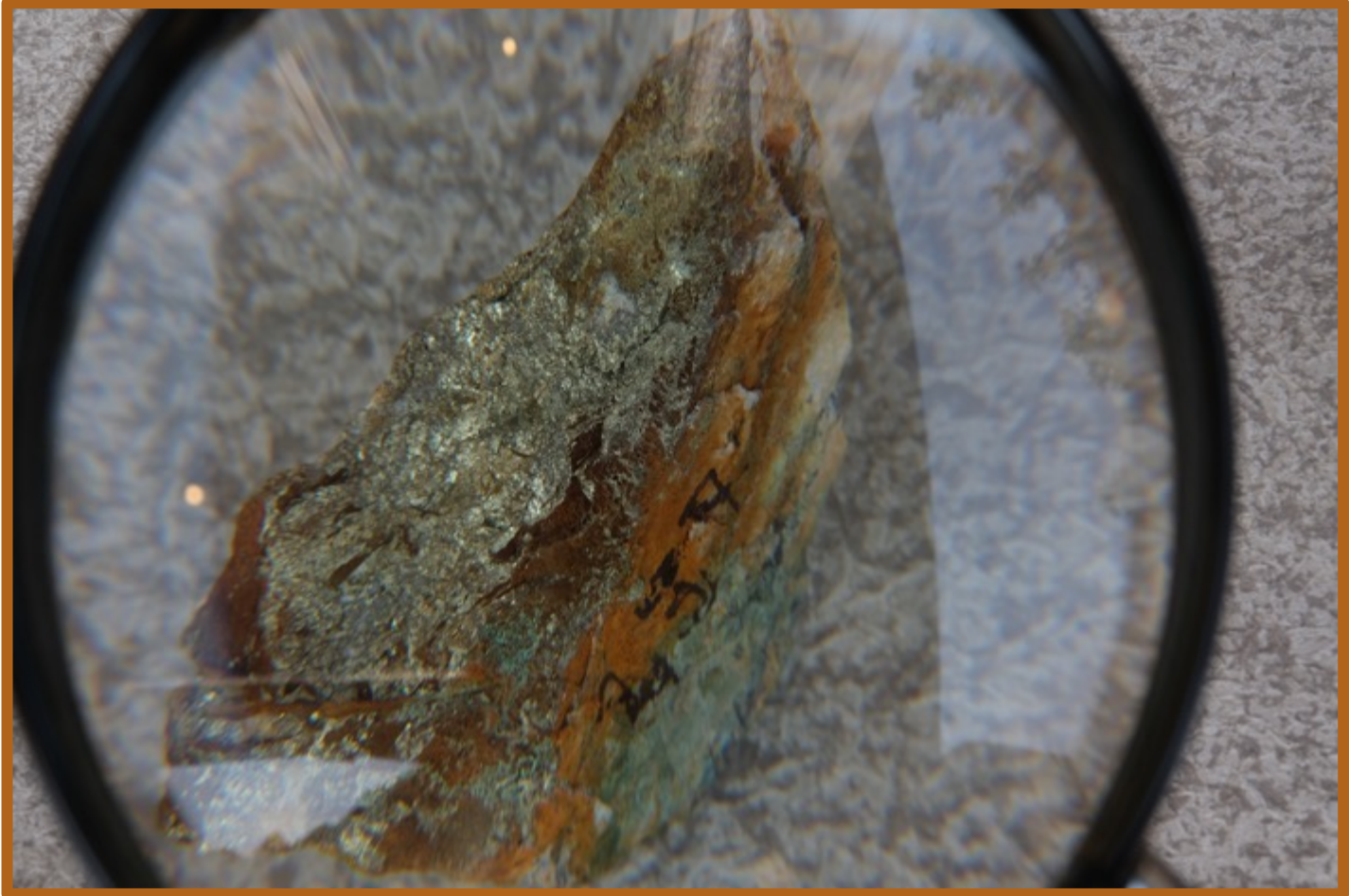
- Over 500 field days spent on the project
- Over 90 copper occurrences examined
- +700 field samples collected and assayed for 36 elements.
- 16 UAV drone missions over high priority copper occurrences
- 6 ground geophysical surveys, (Magnetics and VLF-EM)
- Micro and Macro structural mapping over selected areas
- Inspection of underground working in 4 areas
- Secured 4 adit entrances
- Located and reviewed historical drill core
- Participated in a Legacy clean
- All historical and new data in GIS format and
- Applied for a 15 drill pad, 45 drill hole permit (pending consultation with First Nations)



# SELECTED RESULTS RELEASED TO DATE – 2021/22



<b>LADY LUCK*</b>	<b>- 26.10% COPPER</b>
<b>MAC*</b>	<b>- 14.40% COPPER</b>
<b>8A*</b>	<b>- 25.60% COPPER</b>
<b>HARRIS*</b>	<b>- 5.72% COPPER</b>
<b>2A*</b>	<b>- 4.83% COPPER</b>
<b>2B*</b>	<b>- 4.66% COPPER</b>
<b>CREEK*</b>	<b>- 6.84% COPPER</b>
<b>KEYS SOUTH*</b>	<b>- 28.30% COPPER</b>
<b>BELCHER CREEK*</b>	<b>- 7.69% COPPER</b>
<b>EM-1 DISCOVERY *</b>	<b>- 10.55% COPPER</b>
<b>BRAD VEIN</b>	<b>-16.05% COPPER</b>
<b>WEST OF THE TORO</b>	<b>-10.55% COPPER</b>
<b>TARGET 11</b>	<b>-1.52% COPPER</b>



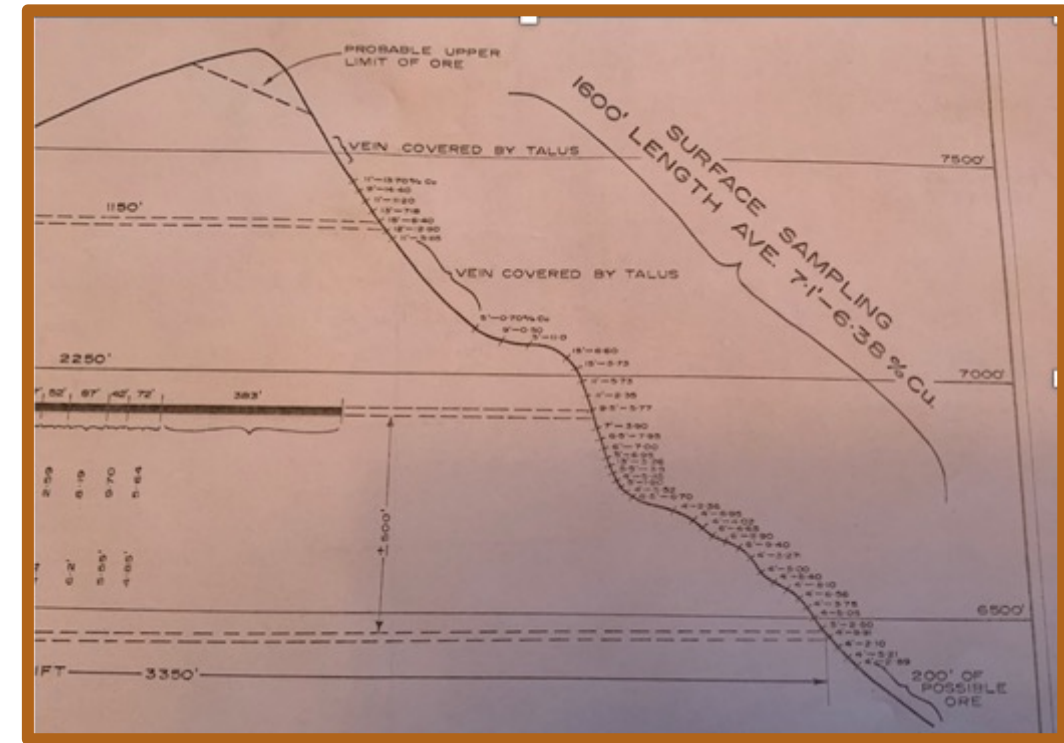
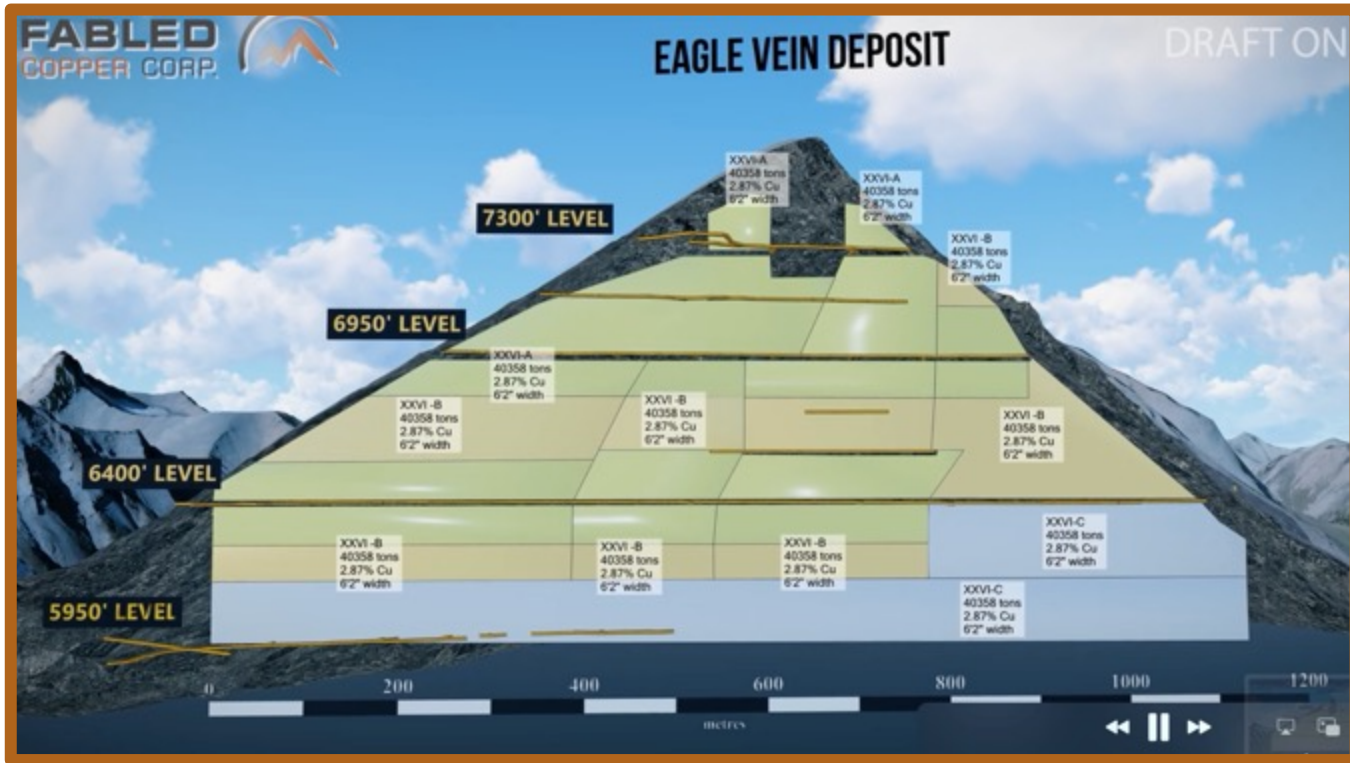
\* See News Releases linked for full detail



# FIRST PRIORITY – DAVIS KEAYS “EAGLE VEIN(S)”



Target: Reconfirm +300M pounds copper outline on the Eagle Vein, open at depth



# DAVIS KEAYS “EAGLE VEIN”

The Davis Keays Eagle vein is hosted in a northeast-trending vertically-dipping quartz-carbonate shear zone that has been **explored by underground development** over a strike **length of** approximately **1,220 meters and to a depth of 460 meters, open at depth**. Over **22,905 feet (6,982 meters / 6.98 kms.) of underground work was completed** that included drifting, cross-cutting, and raising (Harrington, 2021). Drifting on the Eagle vein was carried out at four elevations:

- The 6400 Level extends for approximately 5,700 feet (1,737 meters);  
    **- 2021-2022; Secured portal, UG Lidar and mapping completed**
- The 6950 Level extends for approximately 3,100 feet (945 meters);
- The 7140 Level extends for approximately 280 feet (85 meters) and is only accessible from inside the workings; and
- The 7300 Level extends for approximately 1,850 feet (564 meters).

Levels 6400, 6950, and 7300 extend completely through the mountain, from Caribou Creek on the west side to Eagle Creek on the east.



July 2022 6400 level UG Inspection



# 2021 Photo of Eagle Vein on East Side of Eagle Creek





## SUMMER PROGRAM 2022

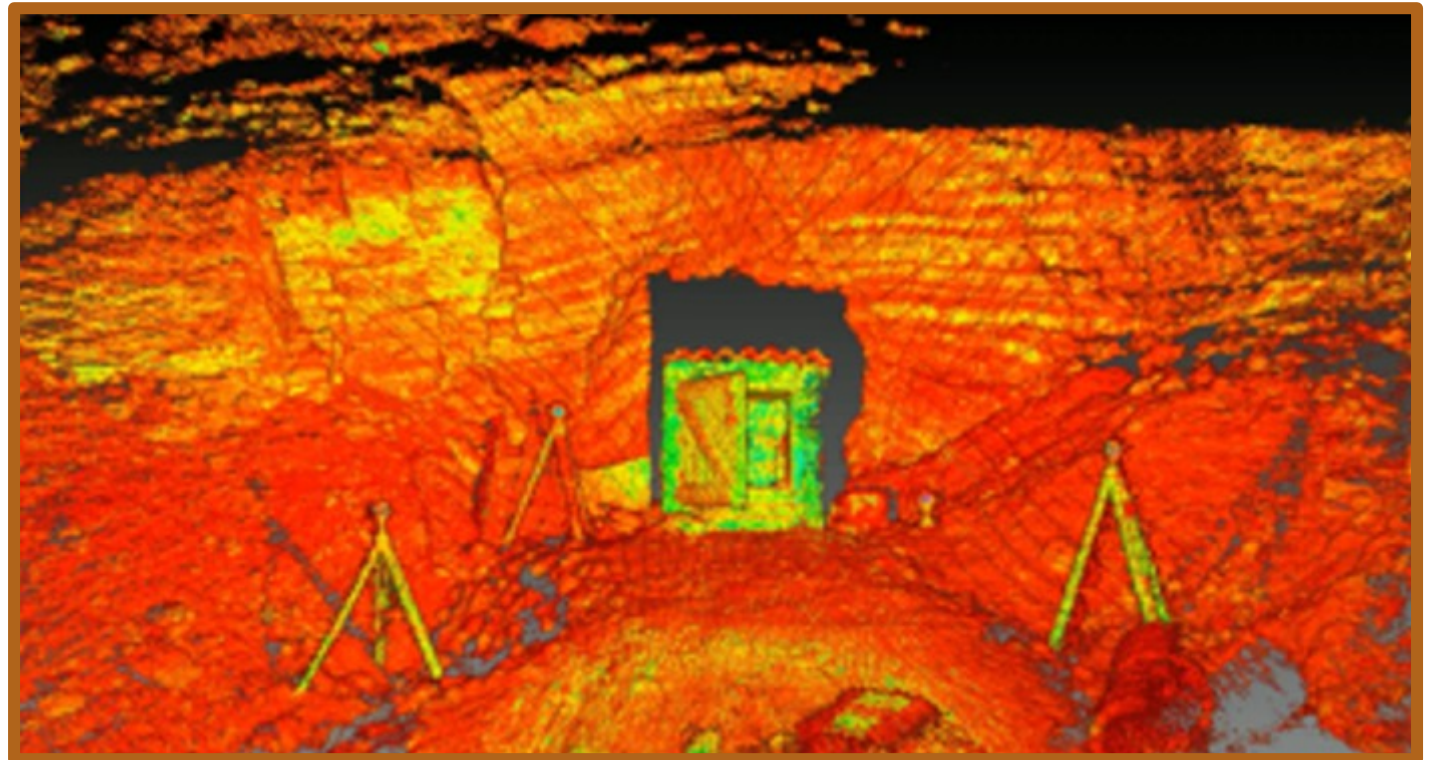


- Security is always a priority.
- Please read the Press Release [here](#)



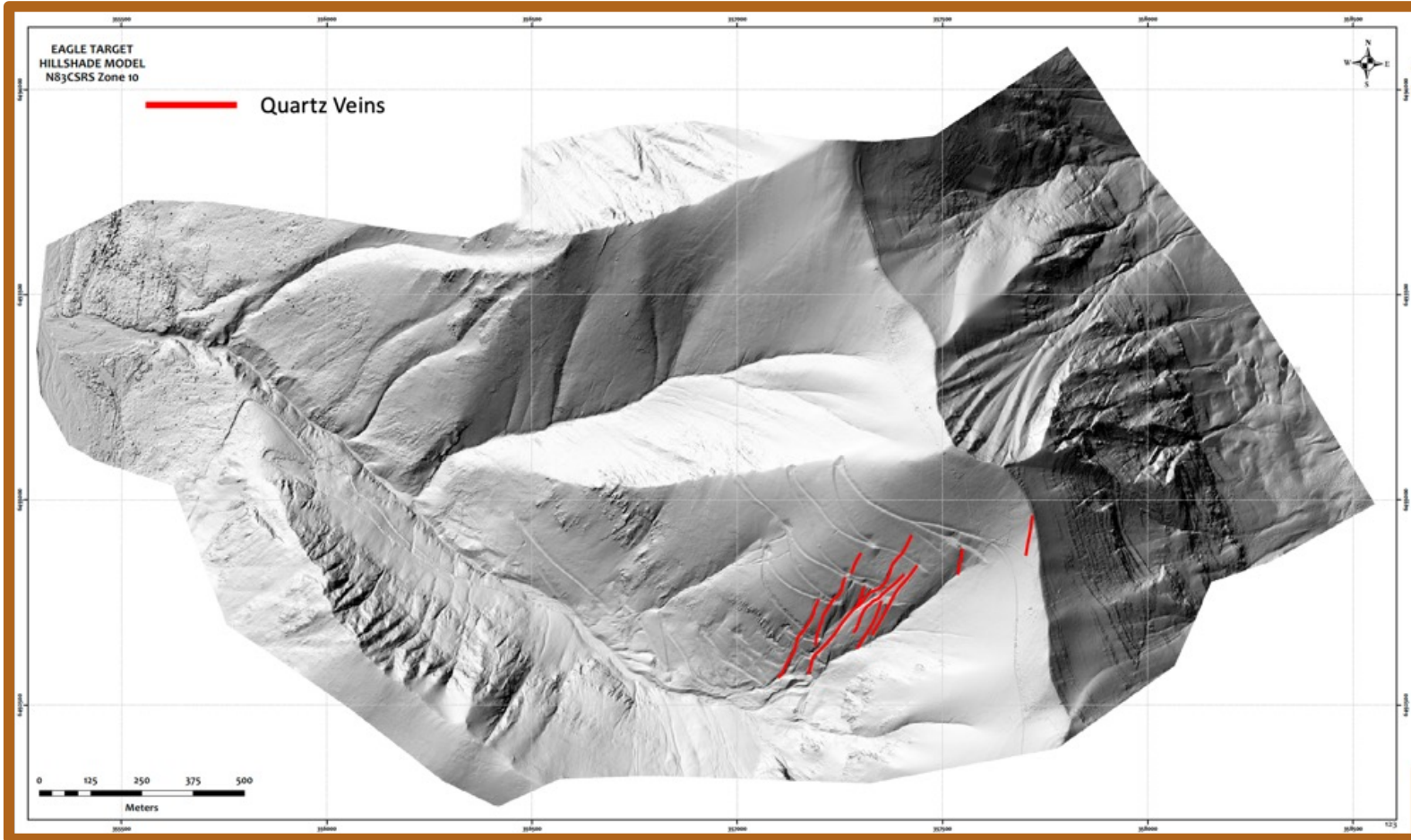


- 2 Underground LIDAR, drone supported 3-D mapping Completed
- Please review [release here](#) and [video here](#)



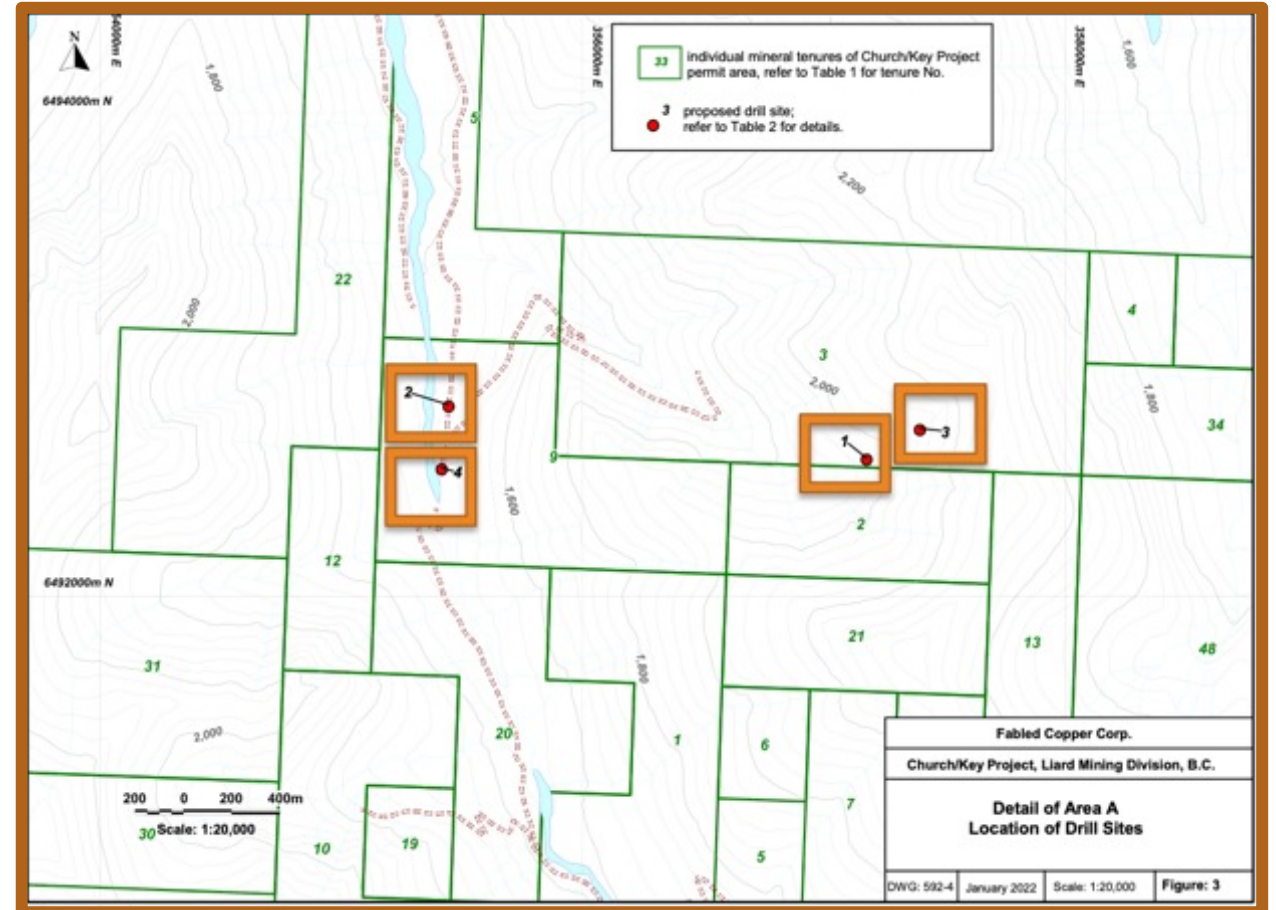


# SUMMER PROGRAM 2022 – QUARTZ VEIN SWARMS RECOGNIZED IN THE STRUCTURAL CORRIDOR OF THE EAGLE VEIN AREA



# SUMMER PROGRAM 2022 – TO CONCLUDE

- In March 2022 the Company applied for a 15-drill pad, 3 holes per pad good for 5-year drill permit to Department of Mines, Permitting. In July, bonding was requested and was posted. At present, the Inspector of Mines, Permitting and the First Nations are in consultation.
- In closing, we will release 2022 field results as they are received and compiled, plus the plans for 2023 as they become available.





# SECTION VIEW OF FIRST DRILL HOLE SET UP ON EAGLE VEIN





# MAGNUM







**Sample D – 723266, 27.20% Copper**



**Sample D – 723377, 25.10% Copper**



**Sample D – 723379, 11.45% Copper**



**Sample D – 723274, 17.75% Copper / 0.70 meters**

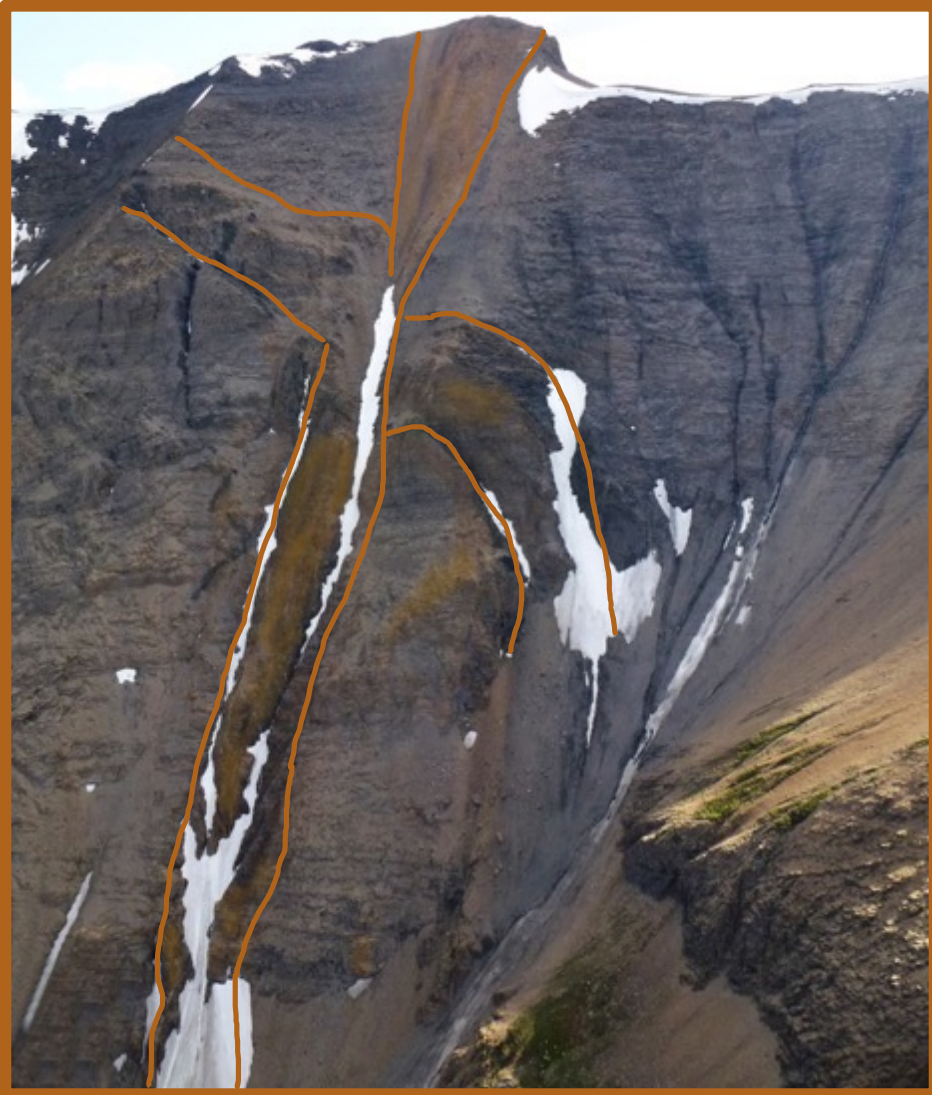


# SO WHAT DOES THE MAGNUM LOOK LIKE





# NEIL VEIN / BRECCIA



The Neil vein has been traced over a strike length of 1,185 metres and a vertical extent of at least 1,579 metres to the valley floor.







**20.10 meters grading 0.34% copper**

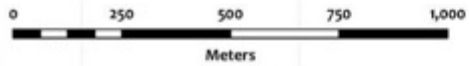
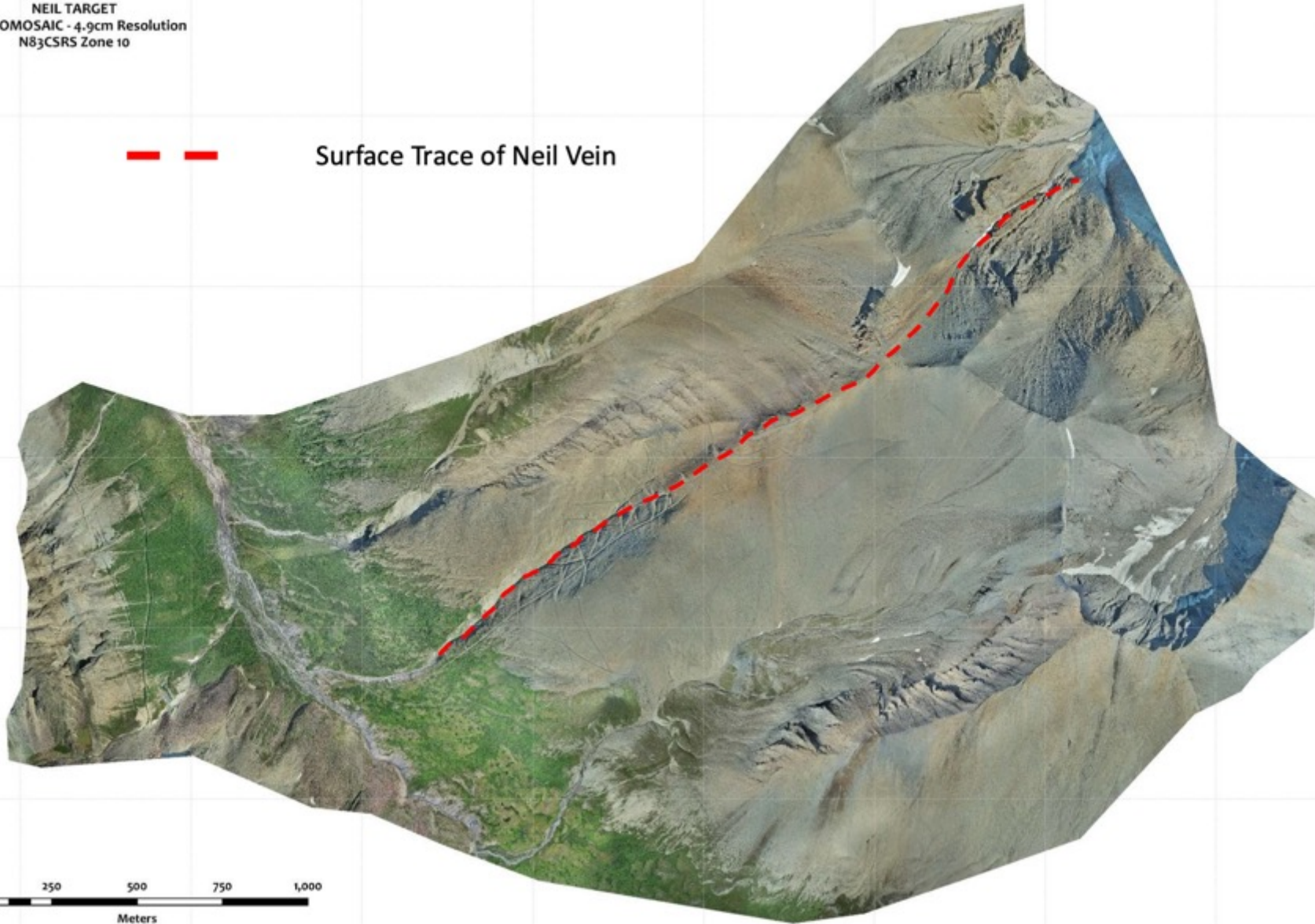




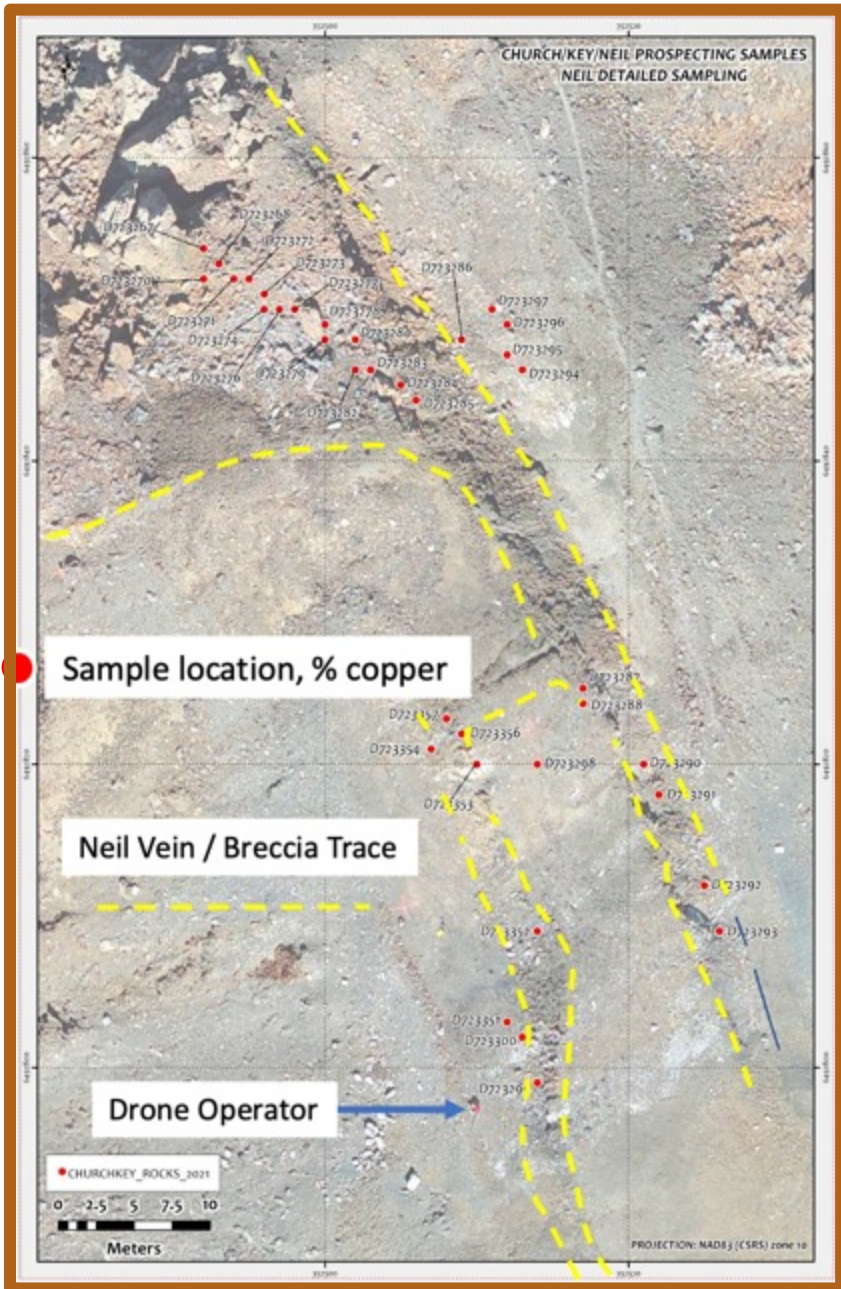
NEIL TARGET  
ORTHOMOSAIC - 4.9cm Resolution  
N83CSRS Zone 10



Surface Trace of Neil Vein







All samples location from the 2021 and 2022 field season were taken with GPS along with GPS enabled field cameras of the sampled units. These photos, sample locations and all assay data pertaining to the assays taken, were then tagged in a geo tag format for plotting in .kml / .kmz GIS systems such as Google Earth.

# MUSKWA



MUSKWA for the Fort Nelson First Nations stands for “Serious, Thought, Intuition, Intent and Wisdom” which reflects Fabled Copper Corp. Values as well





**FABLED**  
COPPER CORP.



**FABLED**  
COPPER CORP. 

# Exploring for Emerging Green Metals in Quebec



Lithium Division projects

CSE:FABL

[Fabledcoppercorp.org](http://Fabledcoppercorp.org)



# HIGHLIGHTS

1.

## World class location

Lithium Properties Located in Quebec an emerging World Class Lithium Hub

2.

## Strong Foundation For Growth

Road access allows for low cost effective exploration

3.

## Significant Exploration Upside

4.

## Track Record In Exploration

Proven exploration team with over 200 years' combined experience.



OHM Property Field Visit July 2023

# Why Lithium?

Lithium is integral to the realization of decarbonization goals and the sustainable future that is being built around the world. Already omnipresent in consumer electronics, lithium-ion batteries are powering electric vehicles and being used as energy storage for renewables.

The Government of Canada has identified lithium as a critical mineral because it is a key material in the renewable energy transition, and Canada has the potential to be a supplier.

"The future is being powered by lithium, a metal that is the key ingredient for making lightweight, power-dense batteries. Electric vehicles (EVs) depend on lithium batteries and EV sales are seeing massive annual growth, and analysts expect global EV sales to increase 57% on a year-over-year basis. Thanks to the rapidly climbing demand for EV batteries, lithium metal prices have gone through the roof."

Forbes, March 2, 2023.





# Why Lithium in Quebec?

Quebec is emerging as a lithium powerhouse, holding the largest lithium reserves in Canada and nearly half of the lithium projects currently underway.

Quebec has the only rock to finished battery grade lithium Carbonate and Hydroxide outside of Asia, making Quebec the foremost lithium production hub outside of Asia.

The Quebec mining industry is known in the world for its considerable resources and mining-friendly policies. Having great relations with the first nations, this makes the province a favorable area for mining exploration and development.

Mining in Quebec is also subject to tax incentives such as Flow-through shares which provide a basic deduction of 130% of their cost, on the condition that they are used to fund eligible expenses.

In keeping with its commitments to the responsible development of its natural resources, the Government du Québec has implemented a broad participatory process on the harmonious development of mining activities in the spring of 2023.



# Lithium Project Overview

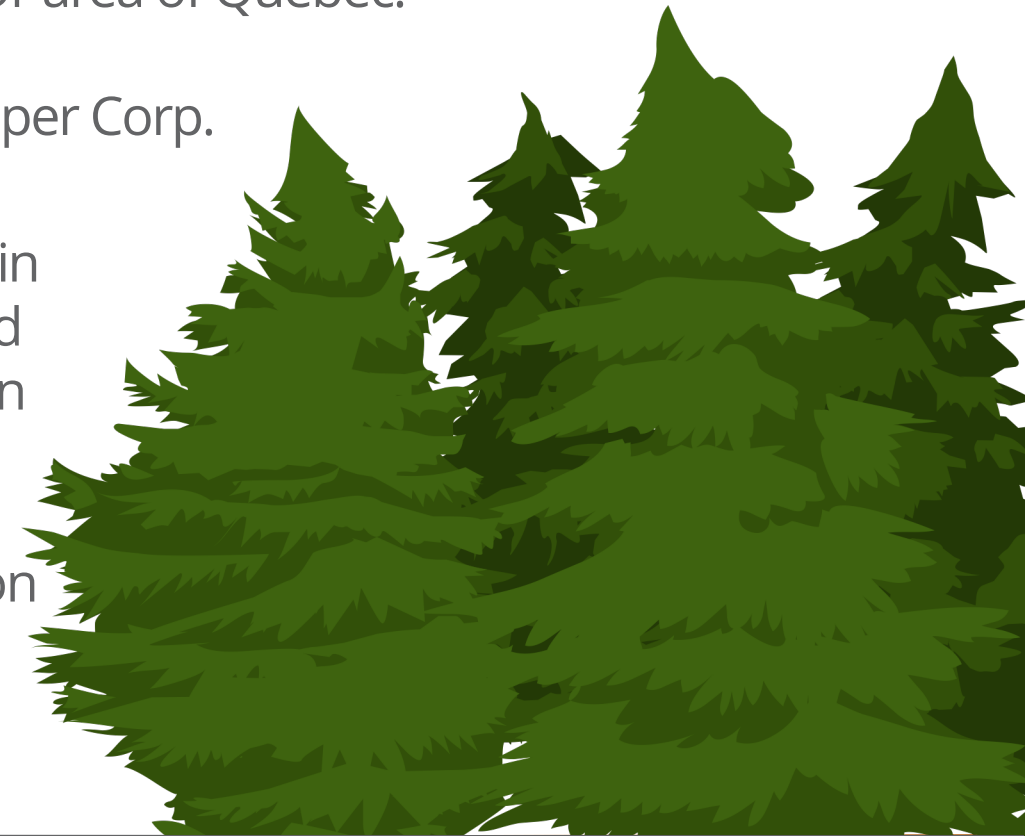
The Company is seeking to broaden and diversify its portfolio.

To this end it has added three lithium groups of claims to its land package, the OHM Property and the VOLT 1-2 lithium Properties, located in the Val D'Or area of Quebec.

The claims will be the basis of a new lithium division for Fabled Copper Corp.

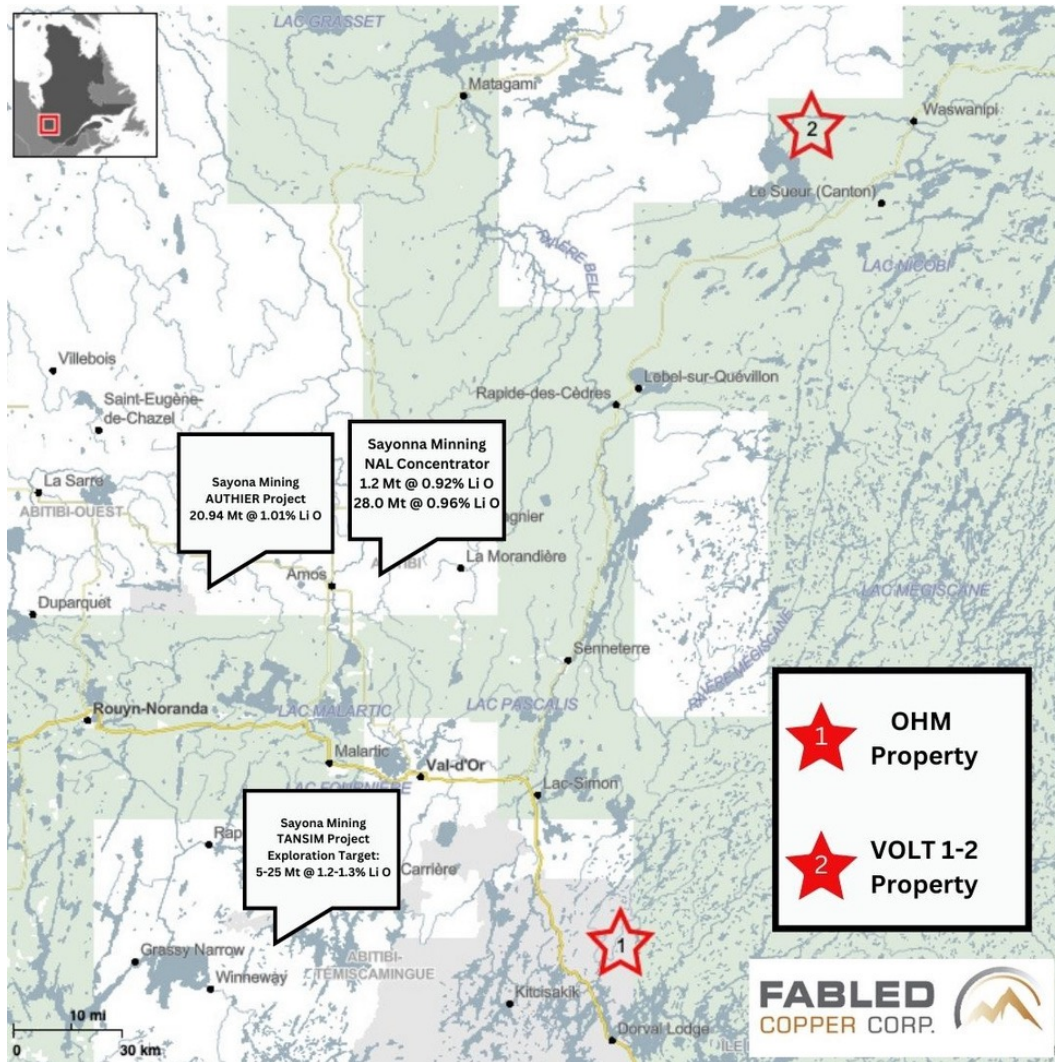
Quebec, in particular, has great potential to become a key player in the north American battery value chain. The province was ranked sixth for Investment Attractiveness for the second year running in the Fraser Institute's Annual Survey of Mining Companies.

Many companies in the automotive sphere are now capitalizing on Quebec's numerous advantages.



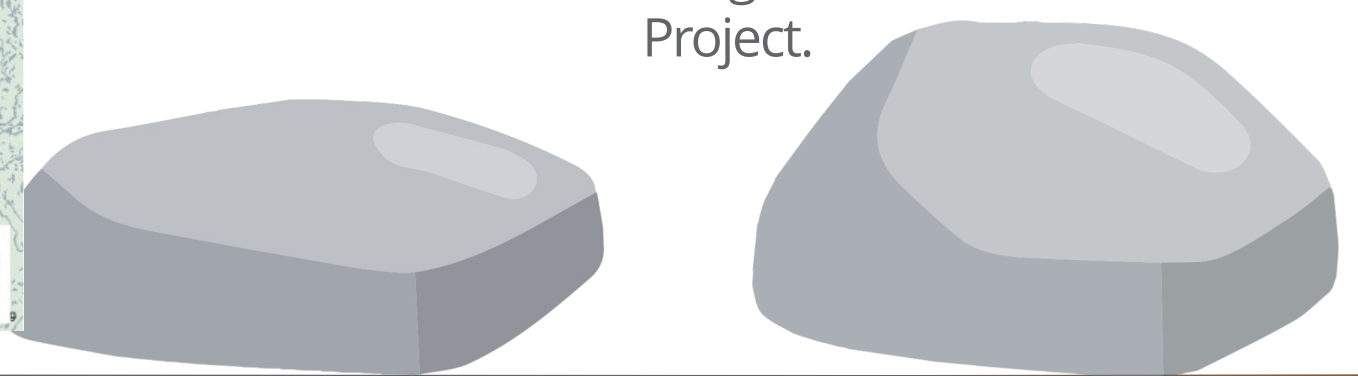


# Location is Everything

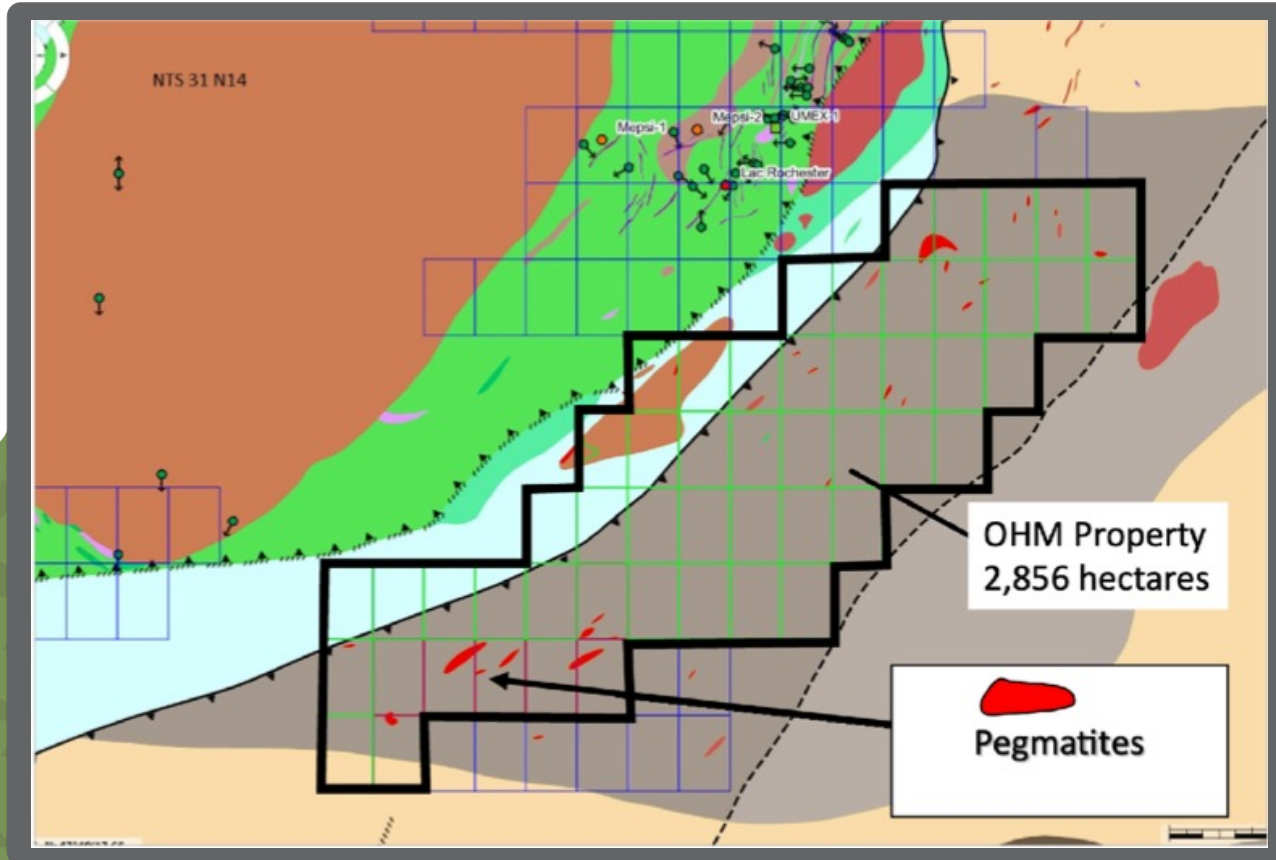


The Property is located approximately 70km southeast from The NAL Lithium Processing Plant (A Piedmont / Sayona Joint Venture), which just announced it produced its first batch of spodumene concentrate and 30km southwest of Val-d'Or, a logistics hub for mining service.

Sayona is also planning for commission of a refinery outputting Lithium Hydroxide approximately 70km southeast of the Property and a third refinery near Becancour some 200km southeast of the Rock Edge's Val d'Or East Lithium Project.



# OHM Lithium Project



The OHM Property consists of 51 contiguous cells comprising of 2,856 hectares located approximately 70 kms south of Val D'Or. Easy access to the property can be gain from main highway, route 117 and forestry roads 43 and 44.

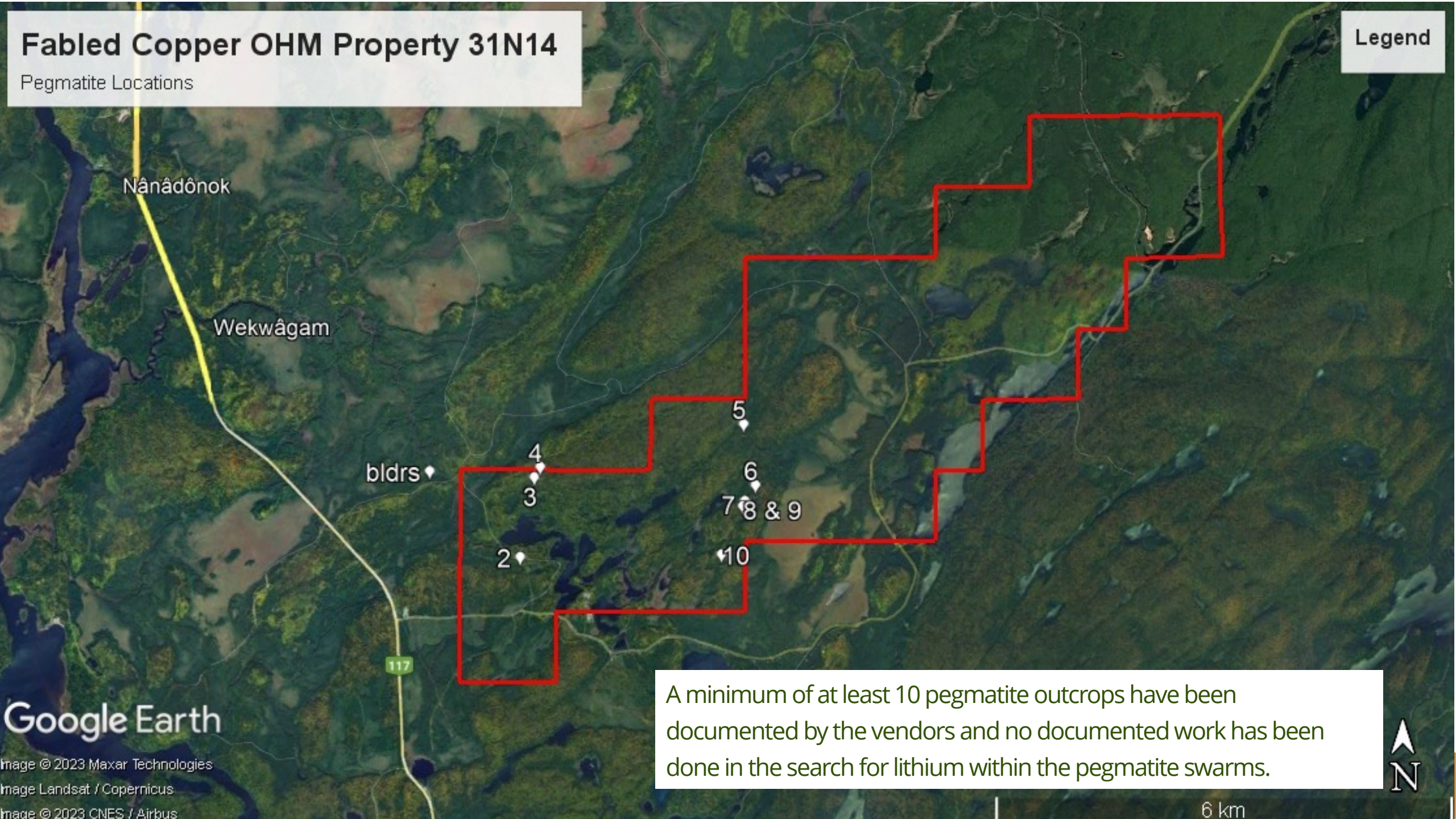
A minimum of at least 10 pegmatite outcrops have been documented by the vendors and no documented work has been done in the search for lithium within the pegmatite swarms.



# Fabled Copper OHM Property 31N14

Pegmatite Locations

Legend



bldrs

2

3

4

10

7

8 & 9

6

5

Google Earth

Image © 2023 Maxar Technologies

Image Landsat / Copernicus

Image © 2023 CNES / Airbus

A minimum of at least 10 pegmatite outcrops have been documented by the vendors and no documented work has been done in the search for lithium within the pegmatite swarms.



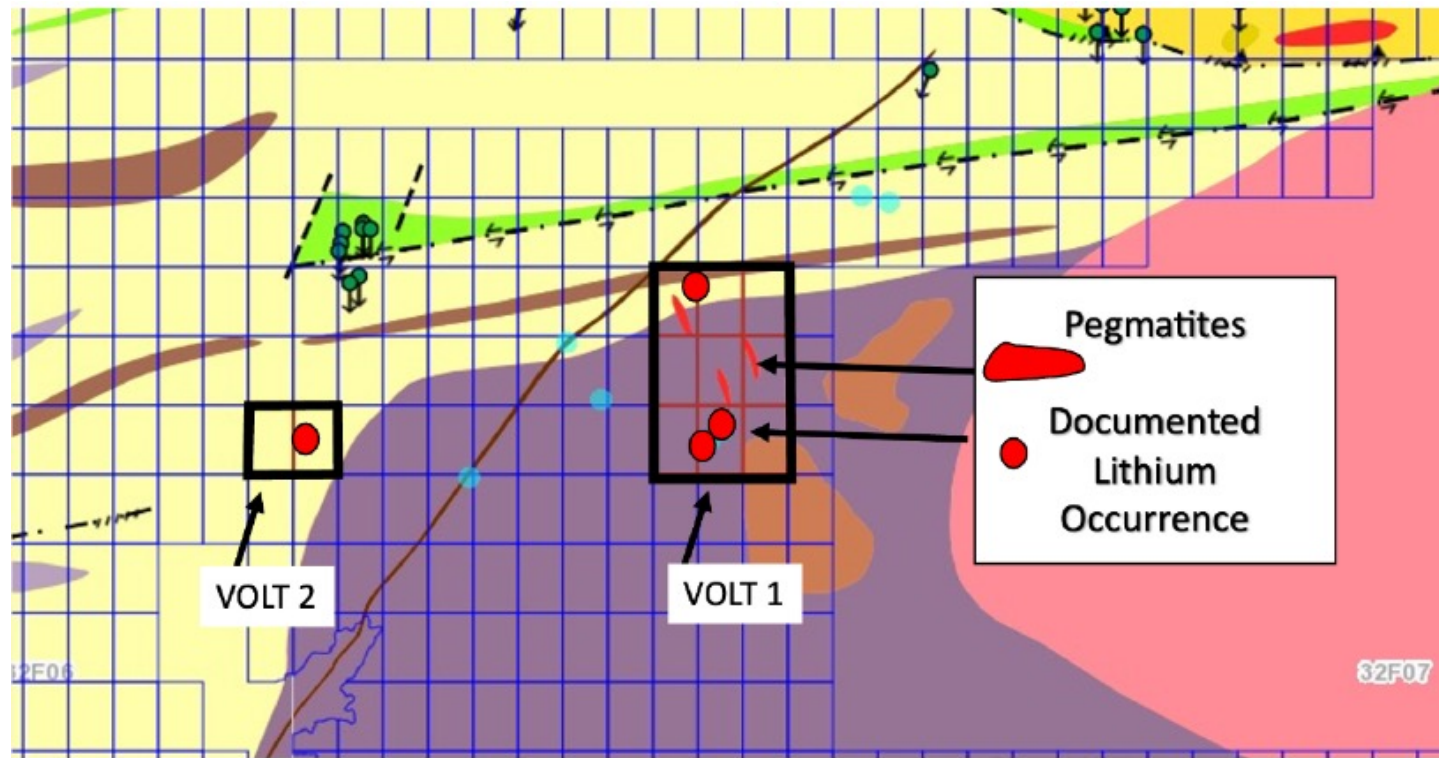
6 km



# Volt 1 and 2 Lithium Project Overview

The VOLT 1 property consists of 9 contiguous cells comprising 504 hectares, whereas the VOLT 2 property due west of the VOLT 1 comprises of 2 cells of 112 hectares.

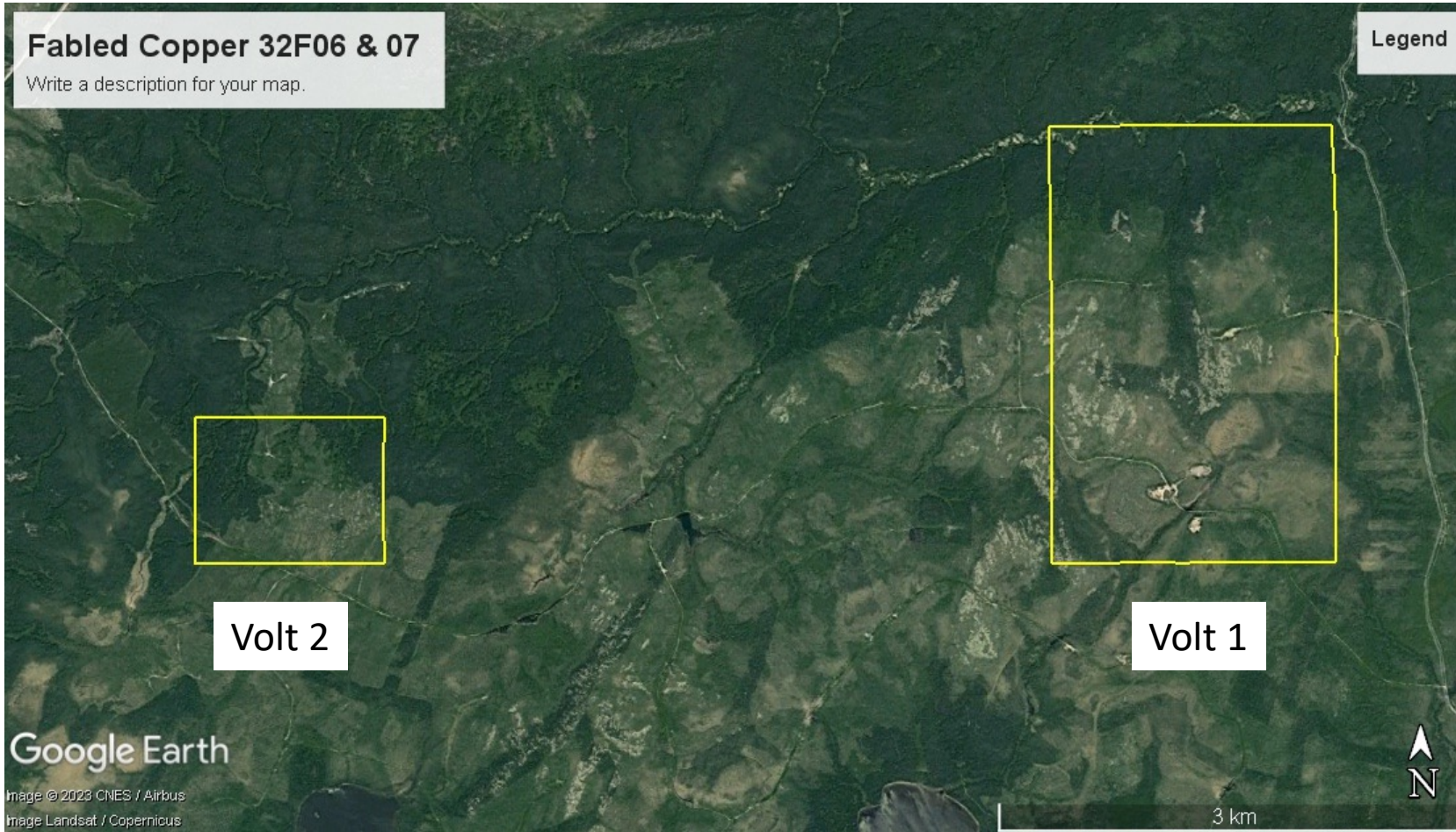
Numerous lithium anomalies directly associated with pegmatites currently suggest a favorable horizon to be explored and tested



The development of several logging roads over the past few years allows for on site access.



# Volt 1 and 2 Lithium Project Overview



Volt 1 Property Field Visit July 2023



# INVESTMENT SUMMARY

## GREEN CRITICAL METALS EXPLORATION

1.

Prove Management Track Record

2.

Extremely Undervalued Compared to Asset Base and Other Explorers with Tight Share Structure

3.

Strong Discovery Potential Property for Copper and Lithium Using Cutting Edge Technology.

4.

Well Funded with a Clear Vision for Critical Metal Growth

*Follow us as we explore for Fabled Critical Metals in Canada*



**FABLED**  
COPPER GOLD  
CORP.



**Fabled Copper Gold Corp.**

Suite 480 – 1500 West Georgia St.  
Vancouver, BC V6G 2Z6

Telephone: 819-316-0919

**CSE: FABL**

**Contact Person**

Peter Hawley – CEO, President & Director  
[peter@fabledcopper.org](mailto:peter@fabledcopper.org)

